

QUALITY

Microfilt offers a wide choice of high quality engineered housings & equipments with precise construction for general use & critical applications. At Microfilt, quality is integral part of the entire manufacturing process and not as afterthought. We believe that "Quality in a service or product is not what you put into it. It is what the client or customer gets out of it."

ENGINEERING

Microfilt Application Engineers, with wide exposure to your industry/sector, will help you to select the filtration system/process which is best suited for your requirements. Installation drawings for filter housings are available on request from our Technical Databank.

Once drawings are finalized & materials are chosen, engineering department works on production. During this phase, precision strict quality determines the capability and stability of the manufacturing equipment, as well as the final product.

SELECTION

Microfilt offers a selection of range of filter housings and equipments for variety of parameters

- Filter housings and equipments features a choice of sanitary/non-sanitary & industrial designs.
- Filter housings and equipments can accommodate variety of configuration of filter media as per application
- Filter housings and equipments comes with gaskets and O-rings compounded from FDA approved materials.
- For corrosive fluids wetted parts can be PP/PTFE/PVDF to avoid corrosion.

www.microfiltindia.com

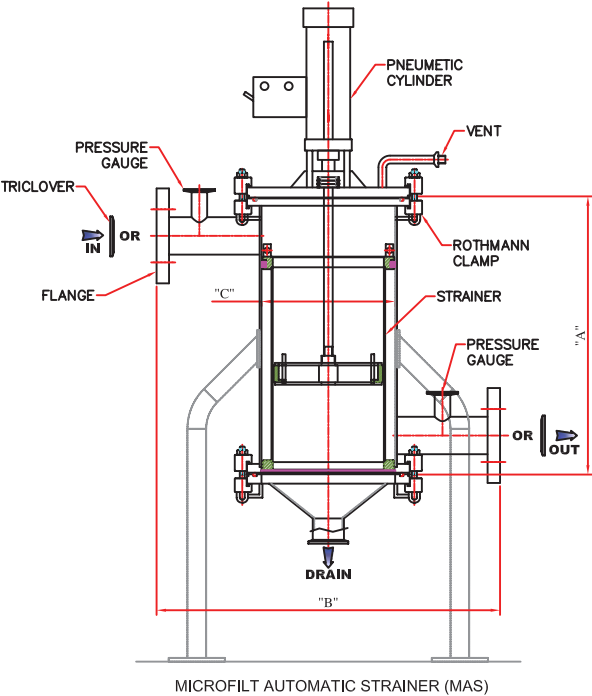


SOLID / LIQUID SEPARATION FILTRATION EQUIPMENTS



MICROFILT AUTOMATED STRAINER (MAS™)

MICROFILT AUTOMATED STRAINER (MAS™) are offered in several configurations requiring filtration from more than 1000 microns to less than 20 for liquids is very high in viscosity in excess of 1 lac C.P. MAS is mechanically cleaned-in-place filters, eliminates requirement of high area filter. It continuously cleans the filter surface and solids can be intermittently discharged from discharge point. When processing water and water like liquids where a low initial investment is demanded, the Standard Series delivers tremendous benefits. Available in 207, 540, 801, and 1602 models, the Standard Series enables operation at a vast range of flow Rates and retentions. MAS filters are ideal for continuous flow (and therefore batch) applications. Range of filter media and Micron rating of filter media variation depends on type of application.



	MAS 207	MAS 405	MAS 801	MAS 1602
Total Hold Up Approx (litres)	0.5	5 L	15 L	40 L
Discharge cone capacity (litres) Approx	<0.1	<0.2	0.7	6
Area (m²)	0.013	0.08	0.18	0.4
Flow Rate Range at 75 micron	-	0.5 – 7 m³/hr	2-4 m³/hr	7-40 m³/hr

PART NO.	"A" (IN MM)	"B" (IN MM)	"C" (IN MM) ID	CONNECTION				BOX SIZE IN INCH (LxWxH)
				INLET OUTLET	PRESSURE GAUGE	VENT	DRAIN	
G0001–MAS207BR	85	220	102	1"	1"	1.4"	0.8x0.8x1.5	
G0001–MAS540BR	450	450	214	1"	1.5"	1/2"	1.5"	23 x23 x54
G0001–MAS801BR	450	550	146	2"	1.5"	1/2"	2"	27x27x58
G0001–MAS1602BR	830	600	272	3"	1.5"	1/2"	2"	30x30x88

ORDERING GUIDE:

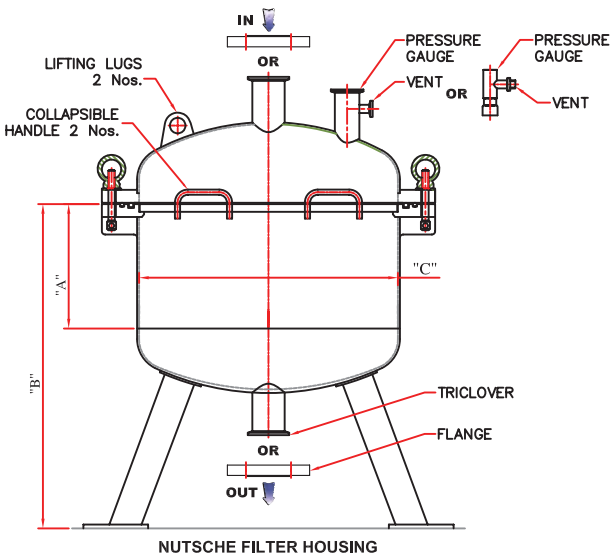
FAMILY	MAS MODEL NUMBER	WETTED PART	BASE CONFIGURATION	JACKETING
G0001 - MAS (Microfilt Automated Strainer)	MAS207 MAS540 MAS801 MAS1602	A = SS316L	C = Triclover Clamp N = Nut Bolt R = Rothmann Clamp S = Swing Bolt	J = Jacketed JI = Jacketed & Insulated N = Non Jacketed
		B = SS316		
		C = SS304		
		D = PP		
		E = PVDF		
		F = HALAR		
		G = ETFE		
		H = Hastelloy		
		I = PFA		
		J = PTFE/TEFLON		



NUTSCHE FILTER

NUTSCHE FILTER are offered batch filtration technique that uses vacuum / pressure in a closed vessel is mostly used in chemical and pharmaceuticals industries. The system consists of closed vessels with variety of filter media. In this filter solid/liquid slurry is aided by pressurizing the vessels /applying the vacuum. Liquid is passed through the filter and solid is concentrated on filter media i.e. cake is retained on filter medium. Synthetic filter cloth, filter pad or the metallic filter is mostly use as filter media.

This filter is specially designed for solid liquid separation. We offer cleanable, non-fibre / particle releasing Sintered SS316L filter discs as a option. This is a major advantage in applications requiring filtration in API / fine chemical. Nutsche filters are designed to facilitate flexible discharge.



PART NO.	"A"	"B"	"C"	CONNECTION					HOLD UP VOLUME IN LIT.	BOX SIZE IN INCH (LxWxH)
	(IN MM)	(IN MM)	(IN MM)	INLET OUTLET	PRESSURE GAUGE	VENT				
	ID									
F0001—300PBS	200	545	300	1.5"	1.5"	1/4"	1.5"	1/4"	18	31x24x24
F0001—400PBS	250	670	400	1.5"	1.5"	1/4"	1.5"	1/4"	40	37x27x27
F0001—500PBS	250	680	500	2"	1.5"	1/2"	1.5"	1/2"	64	38x29x29
F0001—550PBS	250	695	550	2"	1.5"	1/2"	1.5"	1/2"	80	41x30x30
F0001—600PBS	250	705	600	2"	1.5"	1/2"	1.5"	1/2"	95	42x33x33
F0001—650PBS	250	715	650	2"	1.5"	1/2"	1.5"	1/2"	115	42x35x35
F0001—800PBS	300	800	800	2"	1.5"	1/2"	1.5"	1/2"	215	46x40x40
F0001—900PBS	350	870	900	2"	1.5"	1/2"	1.5"	1/2"	318	50x44x44
F0001—1000PBS	350	890	1000	2"	1.5"	1/2"	1.5"	1/2"	408	51x48x48

ORDERING GUIDE:

FAMILY	DIAMETER (Nominal)	FILTER MEDIA	WETTED PART	BASE CONFIGURATION	JACKETING
F0001 - NUTSCH FILTER HOUSING	DIAMETER OF NUTSCH FILTER 0300 = 300 mm Dia 0500 = 500 mm Dia 0550 = 550 mm Dia 0600 = 600 mm Dia 0900 = 900 mm Dia 1000 = 1000 mm Dia	P = CMDF Pad C = Cloth S = SS Screen	A = SS316L	C = Triclover Clamp N = Nut Bolt R = Rothmann Clamp S = Swing Bolt	J = Jacketed JI = Jacketed & Insulated N = Non Jacketed
			B = SS316		
			C = SS304		
			D = PP		
			E = PVDF		
			F = HALAR		
			G = ETFE		
			H = Hastelloy		
			I = PFA		
			J = PTFE/TEFLON		

SPARKLER FILTER (HPMS™)

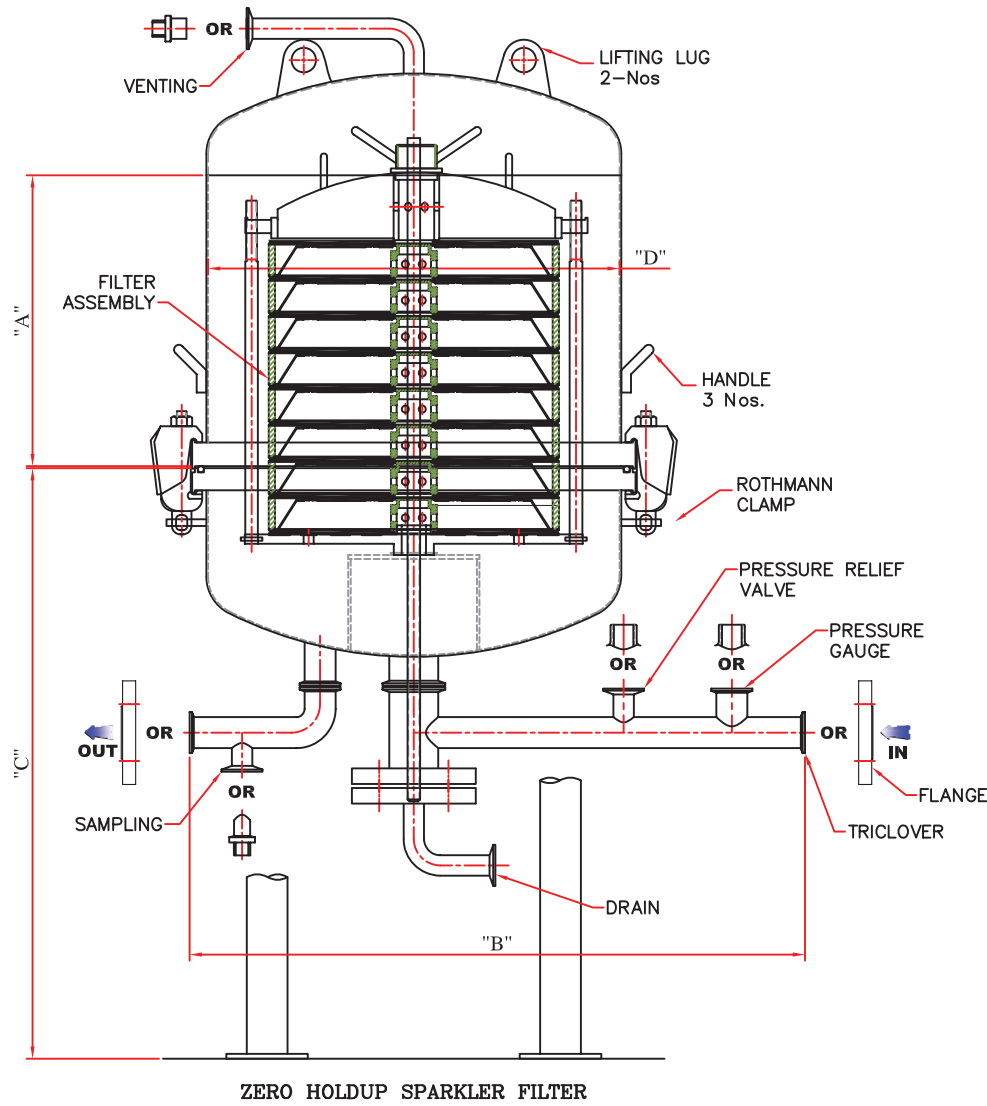
MICROFILT'S SPARKLER FILTERS i.e. Horizontal Plate Microfiltration System also known as HPMS™ filter, redefine filtration through compactness, ease of operation and robust engineering. This are ideally suited for filtration of syrup, liquid, chemicals, food & beverages etc. Sparkler filter equipment has been specifically designed to accommodate filter sheets of variable nominal diameter 8", 14", 18", & 24" as per design with a surface area ranging from 0.1 - 10 m².

Sparkler filters are totally enclosed, leak proof assembly. Sparkler filters, Filter cartridge assembly made of no. of disc type filter plates perforated filter screens, filter media, Inter locking cups with pump & piping, mounted on trolley. The swing bolt design ensures air tight sealing and also gives the operator the ability to quickly assemble and disassemble the filtration system. Jacketing option can be provided for heating or cooling the product. The zero hold up models ensures all the fluid is transferred to the filtrate side without any holdup. Sparkler filters features simplicity, efficiency, low maintenance & cost effective.

We offer customized sparkler filter in combination with other filter equipments which include pre-stack assembly, bag filter, cartridge filter etc. as per design with option of zero hold up to offer complete solutions.



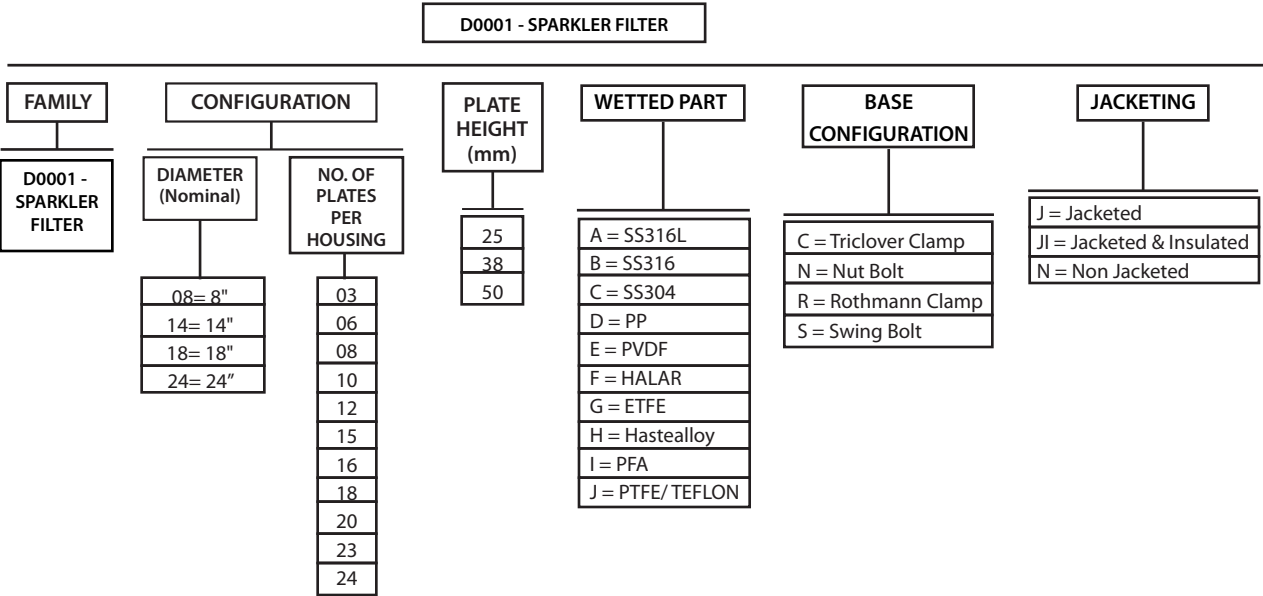
Diameter of sparkler filter in inch	Plate Ht in mm	No. of plate	Total Volume In Litre	Total Area In m2
8	25	10	5.8	0.254
8	38	10	9.2	0.254
14	25	15	30.4	1.321
14	38	10	31.7	0.881
14	50	10	42.3	0.881
18	25	12	41.0	1.782
18	38	15	80.2	2.228
18	50	10	71.3	1.485
24	25	10	60.7	2.641
24	38	24	228.2	6.338
24	50	10	126.8	2.641



PART NO.	PLATE HEIGHT IN MM	NOS. OF PLATE "A" (IN MM)						"B" (IN MM)	"C" (IN MM)		"D" (IN MM)	CONNECTION								
		3	6	8	10	15						INLET OUTLET	PRESSURE GAUGE		VENT		DRAIN		SAMPLING	
D0001-08XXBRC	25	180	250	320	370	520		600	500	300	1"	1"	1/4"	1"	1/4"	1"	1/4"	1"	1/4"	
D0001-08XXBRC	38	230	350	420	520	720		600	500	300	1"	1"	1/4"	1"	1/4"	1"	1/4"	1"	1/4"	
NOS. OF PLATE		6	8	10	15															
D0001-14XXBRC	25	300	350	400	550			755	645	505	1.5"	1.5"	1/2"	1"	1/2"	1"	1/2"	1"	1/2"	
D0001-14XXBRC	38	400	450	550	750			755	645	505	1.5"	1.5"	1/2"	1"	1/2"	1"	1/2"	1"	1/2"	
D0001-14XXBRC	50	480	580	700	1000			755	645	505	1.5"	1.5"	1/2"	1"	1/2"	1"	1/2"	1"	1/2"	
NOS. OF PLATE		10	12	15	18	20	23		10 to 12	18 to 23										
D0001-18XXBRC	25	380	430	380	480	550	650	810	700	850	800	1.5"	1.5"	1/2"	1"	1/2"	1"	1/2"	1"	
D0001-18XXBRC	38	480	570	550	680	750	880	810	700	850	900	1.5"	1.5"	1/2"	1"	1/2"	1"	1/2"	1"	
D0001-18XXBRC	50	450	550	730	900	1000	1200	810	850	1050	2"	1.5"	1/2"	1"	1/2"	1"	1/2"	1"	1/2"	
NOS. OF PLATE		10	15	16	18	20	24		10 to 15	16 to 24										
D0001-24XXBRC	25	380	500	400	450	500	620	1070	750	900	1200	2"	1.5"	1/2"	1"	1/2"	1"	1/2"	1"	
D0001-24XXBRC	38	500	720	600	700	800	980	1070	750	900	1200	2"	1.5"	1/2"	1"	1/2"	1"	1/2"	1"	
D0001-24XXBRC	50	500	750	800	920	1050	1250	1070	750	900	1200	2"	1.5"	1/2"	1"	1/2"	1"	1/2"	1"	

XX :- NOS. OF PLATE

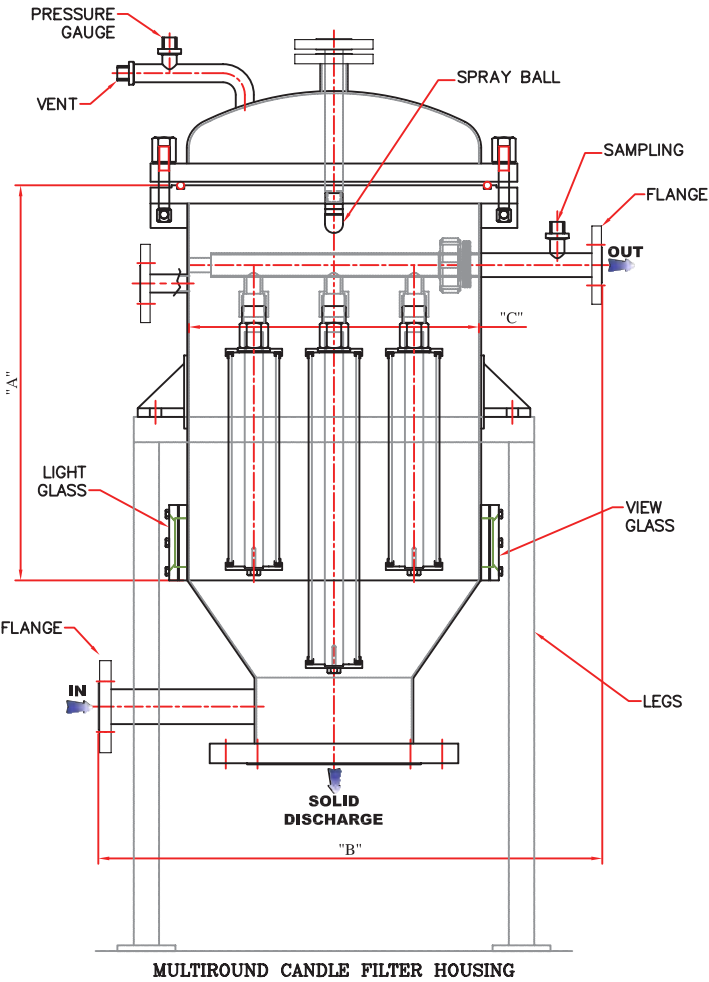
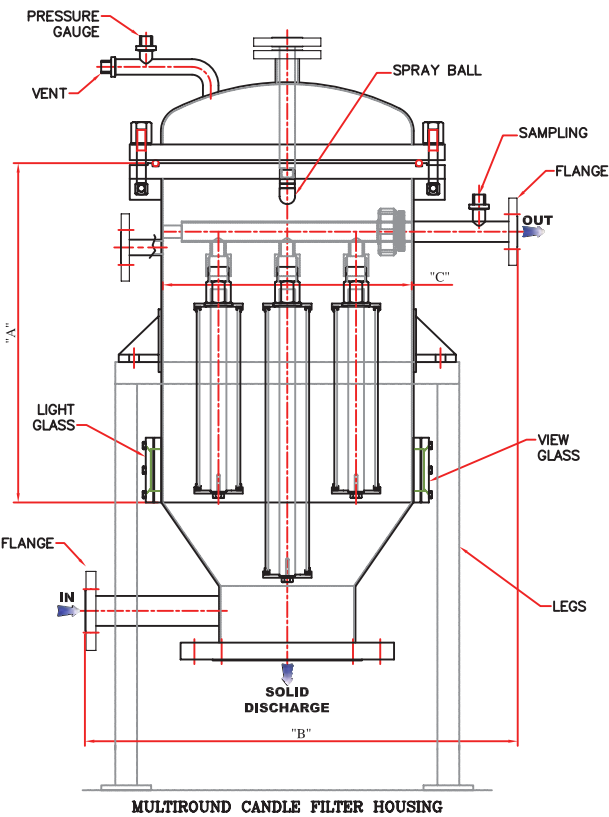
ORDERING GUIDE:



CANDLE FILTRATION SYSTEM (CATRECO™)

CATRECO™ is a MICROFILT system specifically designed to cater to filtration needs of organic process industries manufacturing fine chemicals, bulk drugs, drug intermediates, agrochemicals, dyes intermediates etc. CATRECO™ is bulk solid Recovery/removal System. This is specific to recovery of catalysts for Hydrogenation which recycles the expensive catalysts used in the reaction.

Candle Filter housing has been specifically designed to accommodate SS wedge wire, Metallic Sintered Powdered filter of variable heights required as per process condition in, API & Industrial process for catalyst recovery, carbon removal & cake retention.



No. Of candle per vessel of CATRECO™	**Cake Holding Capacity on Wet Basis(in litres) *For Length of Candle:- 40" *Diameter of Candle:- 70mm *For Cake Thickness:- 25mm
1	8
3	23
5	38
7	53
10	76
14	106
18	136
22	167
27	204
31	235

*Cake holding capacity depends on Size of filter media, Cake thickness and Cake characteristics.
*Nominal Dimension
Other capacities are also available.

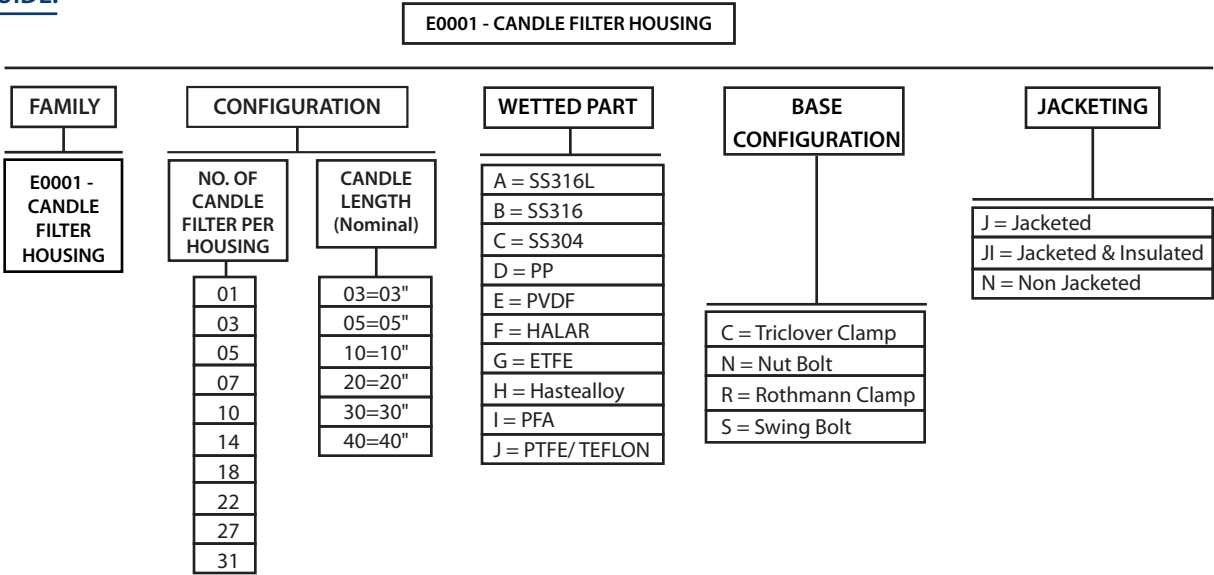
CANDLE CAKE THK. 25 to 35mm															
PART NO.	"A" (IN MM)				"B" (IN MM)	"C" (IN MM) ID	CONNECTION					BOX SIZE IN INCH (LxWxH)			
	10"	20"	30"	40"			INLET OUTLET	PRESSURE GAUGE	VENT	SAMPLING	SOLID DISCHARGE	10"	20"	30"	40"
E0001-03XXNBS	500	790	1040	1240	800	500	1.5"	1/2"	1/2"	1/2"	8"	37x36x75	37x36x83	37x36x91	37x36x99
E0001-05XXNBS	500	790	1040	1240	900	600	1.5"	1/2"	1/2"	1/2"	8"	40x40x78	40x40x86	40x40x94	40x40x102
E0001-07XXNBS	505	795	1045	1245	940	650	1.5"	1/2"	1/2"	1/2"	10"	42x42x81	42x42x89	42x42x97	42x42x105
E0001-10XXNBS	505	795	1045	1245	1055	750	1.5"	1/2"	1/2"	1/2"	10"	46x44x85	46x44x100	46x44x108	46x44x116
E0001-14XXNBS	510	800	1050	1250	1100	800	1.5"	1/2"	1/2"	1/2"	12"	48x46x85	48x46x100	48x46x108	48x46x116
E0001-18XXNBS	510	800	1050	1250	1200	900	1.5"	1/2"	1/2"	1/2"	12"	52x51x96	52x51x104	52x51x112	52x51x120
E0001-22XXNBS	510	800	1050	1250	1350	1050	2"	1/2"	1/2"	1/2"	16"	58x57x101	58x57x109	58x57x117	58x57x125
E0001-27XXNBS	510	800	1050	1250	1400	1100	2"	1/2"	1/2"	1/2"	16"	60x59x103	60x59x111	60x59x119	60x59x127
E0001-31XXNBS	510	800	1050	1250	1500	1200	2"	1/2"	1/2"	1/2"	16"	64x64x107	64x64x115	64x64x123	64x64x131

XX :- Length of Cartridge (10",20",30",40")

CANDLE CAKE THK. 0 to 20mm															
PART NO.	"A" (IN MM)				"B" (IN MM)	"C" (IN MM)	CONNECTION					BOX SIZE IN INCH (LxWxH)			
	10"	20"	30"	40"			INLET OUTLET	PRESSURE GAUGE	VENT	SAMPLING	SOLID DISCHARGE	10"	20"	30"	40"
E0001-03XXNBS	500	790	1040	1240	760	400	1.5"	1/2"	1/2"	1/2"	8"	35x32x72	35x32x80	35x32x88	35x32x96
E0001-05XXNBS	500	790	1040	1240	800	500	1.5"	1/2"	1/2"	1/2"	8"	37x36x75	37x36x83	37x36x91	37x36x99
E0001-07XXNBS	500	790	1040	1240	900	600	1.5"	1/2"	1/2"	1/2"	10"	40x40x78	40x40x86	40x40x94	40x40x102
E0001-10XXNBS	505	795	1045	1245	940	650	1.5"	1/2"	1/2"	1/2"	10"	42x42x81	42x42x89	42x42x97	42x42x105
E0001-14XXNBS	505	795	1045	1245	990	700	1.5"	1/2"	1/2"	1/2"	10"	42x42x85	42x42x93	42x42x101	42x42x109
E0001-18XXNBS	510	800	1050	1250	1100	800	1.5"	1/2"	1/2"	1/2"	12"	48x46x85	48x46x100	48x46x108	48x46x116
E0001-22XXNBS	510	800	1050	1250	1200	900	2"	1/2"	1/2"	1/2"	12"	52x51x96	52x51x104	52x51x112	52x51x120
E0001-27XXNBS	510	800	1050	1250	1300	950	2"	1/2"	1/2"	1/2"	16"	56x53x97	56x53x105	56x53x113	56x53x121
E0001-31XXNBS	510	800	1050	1250	1370	1000	2"	1/2"	1/2"	1/2"	16"	59x56x98	59x56x106	59x56x114	59x56x122

XX :- Length of Cartridge (10",20",30",40")

ORDERING GUIDE:



Customize number of CANDLE Filter is possible