

QUALITY

Microfilt offers a wide choice of high quality engineered housings & equipments with precise construction for general use & critical applications. At Microfilt, quality is integral part of the entire manufacturing process and not as afterthought. We believe that "Quality in a service or product is not what you put into it. It is what the client or customer gets out of it."

ENGINEERING

Microfilt Application Engineers, with wide exposure to your industry/sector, will help you to select the filtration system/process which is best suited for your requirements. Installation drawings for filter housings are available on request from our Technical Databank.

Once drawings are finalized & materials are chosen, engineering department works on production. During this phase, precision strict quality determines the capability and stability of the manufacturing equipment, as well as the final product.

SELECTION

Microfilt offers a selection of range of filter housings and equipments for variety of parameters

- Filter housings and equipments features a choice of sanitary/non-sanitary & industrial designs.
- Filter housings and equipments can accommodate variety of configuration of filter media as per application
- Filter housings and equipments comes with gaskets and O-rings compounded from FDA approved materials.
- For corrosive fluids wetted parts can be PP/PTFE/PVDF to avoid corrosion.

SOLID / LIQUID SEPARATION FILTRATION EQUIPMENTS



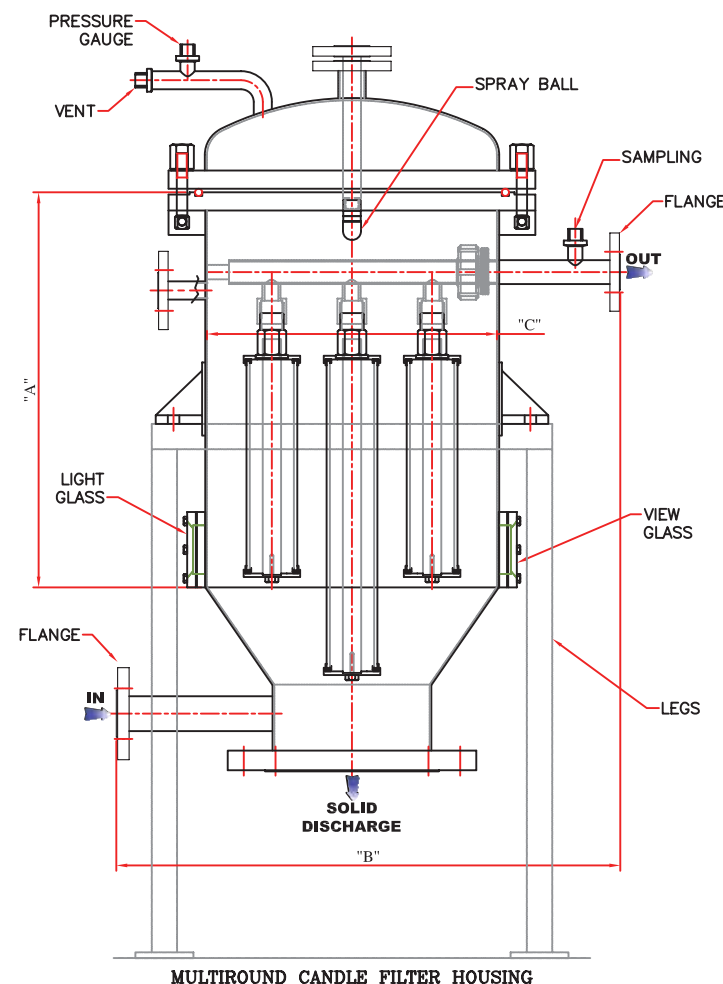
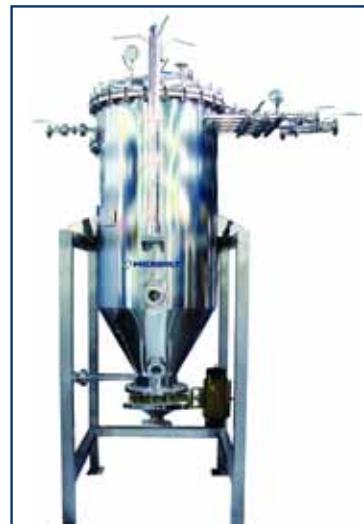
www.microfiltindia.com



CANDLE FILTRATION SYSTEM (CATRECO™)

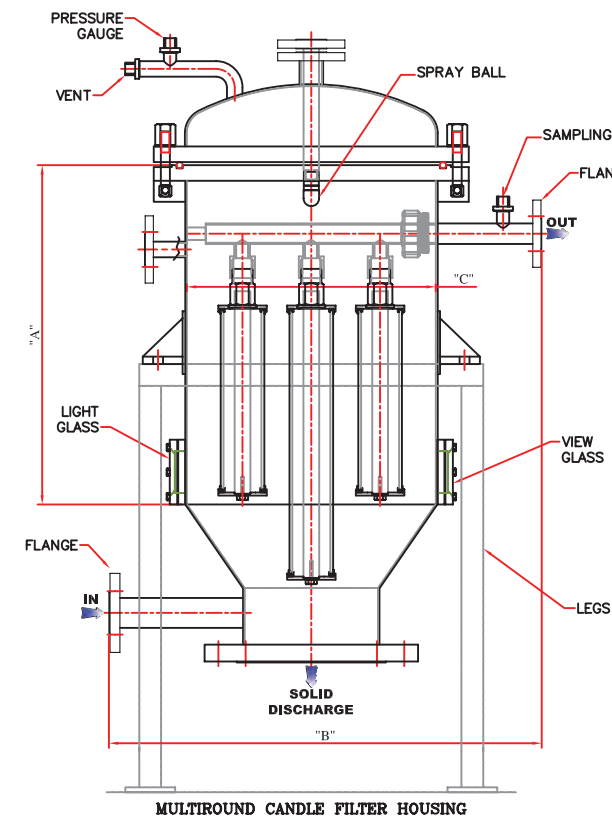
CATRECO™ is a MICROFILT system specifically designed to cater to filtration needs of organic process industries manufacturing fine chemicals, bulk drugs, drug intermediates, agrochemicals, dyes intermediates etc. CATRECO™ is bulk solid Recovery/removal System. This is specific to recovery of catalysts for Hydrogenation which recycles the expensive catalysts used in the reaction.

Candle Filter housing has been specifically designed to accommodate SS wedge wire, Metallic Sintered Powdered filter of variable heights required as per process condition in, API & Industrial process for catalyst recovery, carbon removal & cake retention.



| No. Of candle per vessel of CATRECO™ | **Cake Holding Capacity on Wet Basis(in litres) *For Length of Candle:- 40" *Diameter of Candle:- 70mm *For Cake Thickness:- 25mm |
|--------------------------------------|--|
| 1 | 8 |
| 3 | 23 |
| 5 | 38 |
| 7 | 53 |
| 10 | 76 |
| 14 | 106 |
| 18 | 136 |
| 22 | 167 |
| 27 | 204 |
| 31 | 235 |

*Cake holding capacity depends on Size of filter media, Cake thickness and Cake characteristics.
*Nominal Dimension
Other capacities are also available.



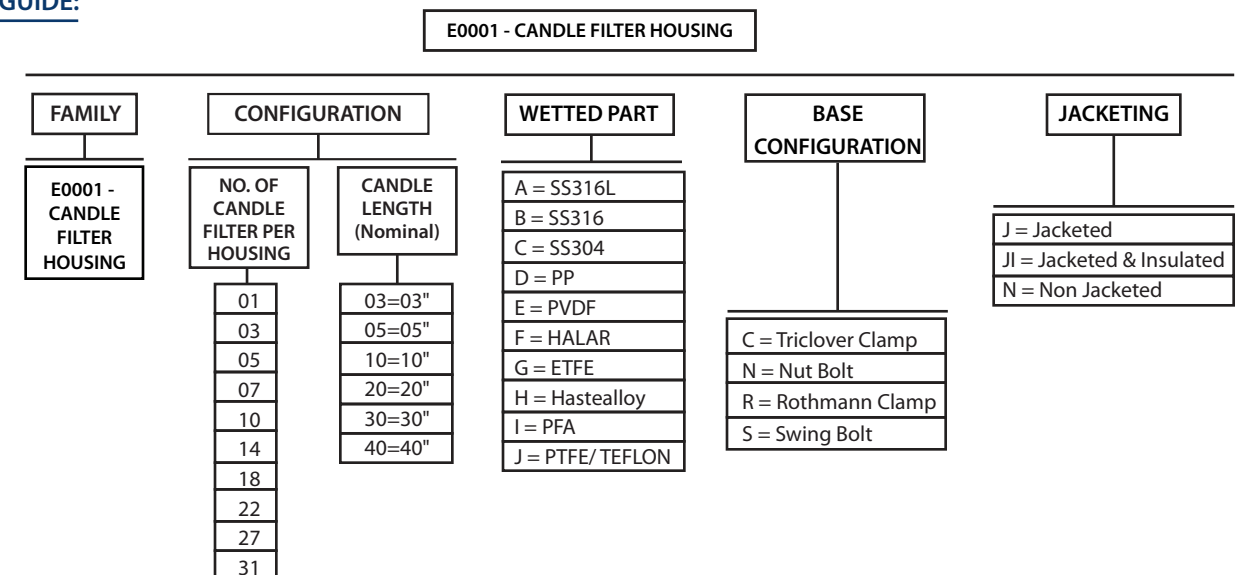
| PART NO. | "A" (IN MM) | | | | "B" (IN MM) | "C" (IN MM) | CONNECTION | | | | | BOX SIZE IN INCH (LxWxH) | | | |
|---------------|-------------|-----|------|------|-------------|-------------|--------------|----------------|------|----------|-----------------|----------------------------|-----------|-----------|-----------|
| | 10" | 20" | 30" | 40" | | | INLET OUTLET | PRESSURE GAUGE | VENT | SAMPLING | SOLID DISCHARGE | 10" | 20" | 30" | 40" |
| | ID | | | | | | | | | | | | | | |
| E0001-03XXNBS | 500 | 790 | 1040 | 1240 | 800 | 500 | 1.5" | 1/2" | 1/2" | 1/2" | 8" | 37x36x75 | 37x36x83 | 37x36x91 | 37x36x99 |
| E0001-05XXNBS | 500 | 790 | 1040 | 1240 | 900 | 600 | 1.5" | 1/2" | 1/2" | 1/2" | 8" | 40x40x78 | 40x40x86 | 40x40x94 | 40x40x102 |
| E0001-07XXNBS | 505 | 795 | 1045 | 1245 | 940 | 650 | 1.5" | 1/2" | 1/2" | 1/2" | 10" | 42x42x81 | 42x42x89 | 42x42x97 | 42x42x105 |
| E0001-10XXNBS | 505 | 795 | 1045 | 1245 | 1055 | 750 | 1.5" | 1/2" | 1/2" | 1/2" | 10" | 46x44x85 | 46x44x100 | 46x44x108 | 46x44x116 |
| E0001-14XXNBS | 510 | 800 | 1050 | 1250 | 1100 | 800 | 1.5" | 1/2" | 1/2" | 1/2" | 12" | 48x46x85 | 48x46x100 | 48x46x108 | 48x46x116 |
| E0001-18XXNBS | 510 | 800 | 1050 | 1250 | 1200 | 900 | 1.5" | 1/2" | 1/2" | 1/2" | 12" | 52x51x96 | 52x51x104 | 52x51x112 | 52x51x120 |
| E0001-22XXNBS | 510 | 800 | 1050 | 1250 | 1350 | 1050 | 2" | 1/2" | 1/2" | 1/2" | 16" | 58x57x101 | 58x57x109 | 58x57x117 | 58x57x125 |
| E0001-27XXNBS | 510 | 800 | 1050 | 1250 | 1400 | 1100 | 2" | 1/2" | 1/2" | 1/2" | 16" | 60x59x103 | 60x59x111 | 60x59x119 | 60x59x127 |
| E0001-31XXNBS | 510 | 800 | 1050 | 1250 | 1500 | 1200 | 2" | 1/2" | 1/2" | 1/2" | 16" | 64x64x107 | 64x64x115 | 64x64x123 | 64x64x131 |

XX :- Length of Cartridge (10",20",30",40")

| PART NO. | "A" (IN MM) | | | | "B" (IN MM) | "C" (IN MM) | CONNECTION | | | | | BOX SIZE IN INCH (LxWxH) | | | |
|---------------|-------------|-----|------|------|-------------|-------------|--------------|----------------|------|----------|-----------------|----------------------------|-----------|-----------|-----------|
| | 10" | 20" | 30" | 40" | | | INLET OUTLET | PRESSURE GAUGE | VENT | SAMPLING | SOLID DISCHARGE | 10" | 20" | 30" | 40" |
| | ID | | | | | | | | | | | | | | |
| E0001-03XXNBS | 500 | 790 | 1040 | 1240 | 760 | 400 | 1.5" | 1/2" | 1/2" | 1/2" | 8" | 35x32x72 | 35x32x80 | 35x32x88 | 35x32x96 |
| E0001-05XXNBS | 500 | 790 | 1040 | 1240 | 800 | 500 | 1.5" | 1/2" | 1/2" | 1/2" | 8" | 37x36x75 | 37x36x83 | 37x36x91 | 37x36x99 |
| E0001-07XXNBS | 500 | 790 | 1040 | 1240 | 900 | 600 | 1.5" | 1/2" | 1/2" | 1/2" | 10" | 40x40x78 | 40x40x86 | 40x40x94 | 40x40x102 |
| E0001-10XXNBS | 505 | 795 | 1045 | 1245 | 940 | 650 | 1.5" | 1/2" | 1/2" | 1/2" | 10" | 42x42x81 | 42x42x89 | 42x42x97 | 42x42x105 |
| E0001-14XXNBS | 505 | 795 | 1045 | 1245 | 990 | 700 | 1.5" | 1/2" | 1/2" | 1/2" | 10" | 42x42x85 | 42x42x93 | 42x42x101 | 42x42x109 |
| E0001-18XXNBS | 510 | 800 | 1050 | 1250 | 1100 | 800 | 1.5" | 1/2" | 1/2" | 1/2" | 12" | 48x46x85 | 48x46x100 | 48x46x108 | 48x46x116 |
| E0001-22XXNBS | 510 | 800 | 1050 | 1250 | 1200 | 900 | 2" | 1/2" | 1/2" | 1/2" | 12" | 52x51x96 | 52x51x104 | 52x51x112 | 52x51x120 |
| E0001-27XXNBS | 510 | 800 | 1050 | 1250 | 1300 | 950 | 2" | 1/2" | 1/2" | 1/2" | 16" | 56x53x97 | 56x53x105 | 56x53x113 | 56x53x121 |
| E0001-31XXNBS | 510 | 800 | 1050 | 1250 | 1370 | 1000 | 2" | 1/2" | 1/2" | 1/2" | 16" | 59x56x98 | 59x56x106 | 59x56x114 | 59x56x122 |

XX :- Length of Cartridge (10",20",30",40")

ORDERING GUIDE:



Customize number of CANDLE Filter is possible